



# McHenry County RACES



## Severe Weather Operations 2012





# McHenry County RACES



- AGENDA
- What's New for 2012
- Weather Callout Process
- Net Operations



# McHenry County RACES



- What's new for 2012?
- New process for when field is activated
  - No deployment unless severe weather is imminent (~30 minutes)
- New Repeaters to be used for operations
  - K9VI and N9HEP repeaters



# McHenry County RACES



- Weather Lead – What is it?
  - One of a group EMA members (any division) who will monitor the watch and decide when, if at all, we start full weather operations.
  - Qualifications:
    - EMA Member
    - Suitable experience in weather operations
    - Has access to appropriate resources (HS internet primarily)



# McHenry County RACES



- Weather Lead – How will it work?
  - A rotation will be set up whereby a weather lead will assume the duty of monitoring the weather watch
  - Purpose is to determine, using preset criteria, when to activate storm spotting resources
  - Primary weather lead will interact with a backup to ensure that the position is filled
  - Operation to be done from home



# McHenry County RACES



## Weather Callout Process

- Prepare
- Get activated by the NWS
- Start an appropriate net (NCS)
- Check in (if participating)
- Listen to the NCS
- Report Hazardous Weather
- Check out when appropriate



# McHenry County RACES



## Weather Callout Process

### Prepare

- Stock your deployment kit
- Check equipment regularly
- Get trained



# McHenry County RACES



## Deployment Kit

- Primary VHF (VHF/UHF) radio and a backup
- Antennas, back up battery/dc adapter
- Manual (or subset thereof)
- Spotters Guide
- Paper and pen, pencil
- Cell phone
- GPS
- Digital Camera
- Other amenities you may desire: anemometer, calipers, Twinkies/Ho-Ho's



# McHenry County RACES



## Check Equipment

- Radios:
  - check into the regular nets or otherwise make sure it works
  - Know where you can use a portable or where you must use a mobile radio
- Test other electronic equipment as needed



# McHenry County RACES



## Check Equipment

### – Radio programming

- Repeaters:

- K9ESV, 146.835, -, 91.5
- KK9DX, 145.410, -, 107.2
- N9HEP, 145.330, -, 107.2
- N9HEP, 443.475, +, 114.8
- K9VI, 443.200, +, 131.8

- Simplex:

- 146.835, 145.410, 147.465, 147.420, 146.460,  
146.415, 446.200, 446.300, 146.520, 147.525,  
147.535, 446.000, 446.400, 446.700



# McHenry County RACES



## Get Trained

- Basic Spotter's Class every 2 years
- Go out with experienced spotters
- Other seminars as desired (DuPage Advanced, Fermi Lab Severe Weather, etc.)



# McHenry County RACES



## Getting Activated

- NWS Activates the NOAA weather radios
- Weather bulletins are retransmitted through the K9ESV repeater
- McHenry County 911 Center activates EMA radios

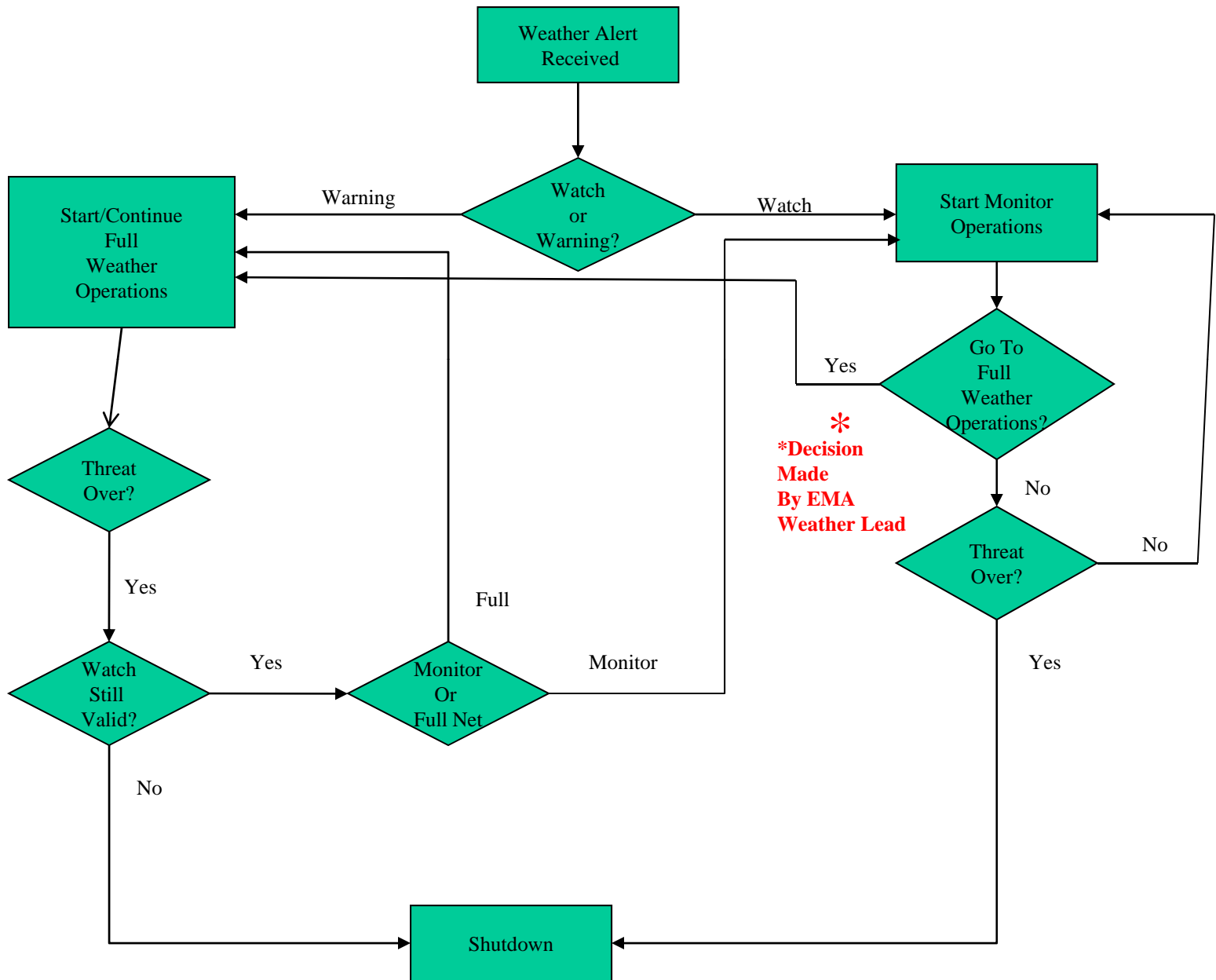


# McHenry County RACES



## Getting activated

- Two Types: Watches (with later Warnings), Warnings
  - Watches: 2 Modes-Monitor and Deploy
    - Monitor : EMA Weather Lead will monitor the watch for possible activation. **No nets or self deployment.**
    - Deploy: Weather Lead determines that warning is probable (~30 minutes) and begins deployment notifications
  - Warnings: Short Fuse (no previous Watch)
    - Start a formal weather net ASAP, Staff at EOC when possible, spot/report from where you are





# McHenry County RACES



- What to do when a weather call out occurs
  - Monitor 146.835 for further instruction
  - Monitor ESMARN 155.025 MHz or EMA Main talkgroup on Starcom System
  - Prepare to respond
    - If a watch, stand by as appropriate
    - If a warning, prepare to spot in place



# McHenry County RACES



- What to do when a weather call out occurs with full operations
  - Check in to the net 146.835 when ready to respond
  - Keep traffic to a minimum, use one of the alternate channels, if necessary (after advising net control).



# McHenry County RACES



## Reportable Conditions

### **Urgent Priority – Report immediately**

- Tornado
- Funnel cloud
- Rotating wall cloud
- Flash flooding

### **High Priority – Report immediately**

- Hail 3/4-inch diameter or larger
- Wind speed greater than 58 mph
- Persistent non-rotating wall cloud
- Rainfall 1 inch or more per hour

### **Lower Priority – Report when able**

- Hail 1/2-inch diameter or larger
- Wind speed greater than 40 mph
- Cloud features suggesting storm organization
- Other locally-defined criteria



# McHenry County RACES



## Net Operations

- Monitor Mode
  - There will be **no** net unless otherwise determined by Weather Lead
  - Don't call EOC. It will most likely not be staffed unless during business hours.



# McHenry County RACES



## Net Operations (NCS)

- Full Operations - Watch (Deploy)
  - Activate Alert Tone Macro
  - Announce that spotters are needed for assignment and that a formal net is now in operation
  - Deploy spotting resources as needed
  - Start a sign in list, report to TC
  - Maintain Control of all traffic on the net



# McHenry County RACES



## Net Operations - NCS

- Full Operations - Warning
  - Activate Alert for Warning
  - Announce WX information
  - Start a formal weather net or perform a roll call of all logged in stations



# McHenry County RACES



## Net Operations - Field Stations

- All traffic to go through net control
- Report emergencies immediately
- Report conditions as requested or directed
- Do not self-deploy or roam unless requested
- Change frequency only after net control acknowledges



# McHenry County RACES



## Net Operations

- Stand Down
  - Net Control to announce stand down and do a roll call of all stations
  - Net will not be shut down until all stations have been contacted and their status verified
  - Net Control to shut down the weather macro at this time, unless monitor operations will continue



# McHenry County RACES



## Next Steps

- Weather Lead Position Fully Defined and Staffed
- Net Control Operators Wanted espc. Daytimes
- Further Weather Net Training in March (on the air)
- Net Control Operator Training in March